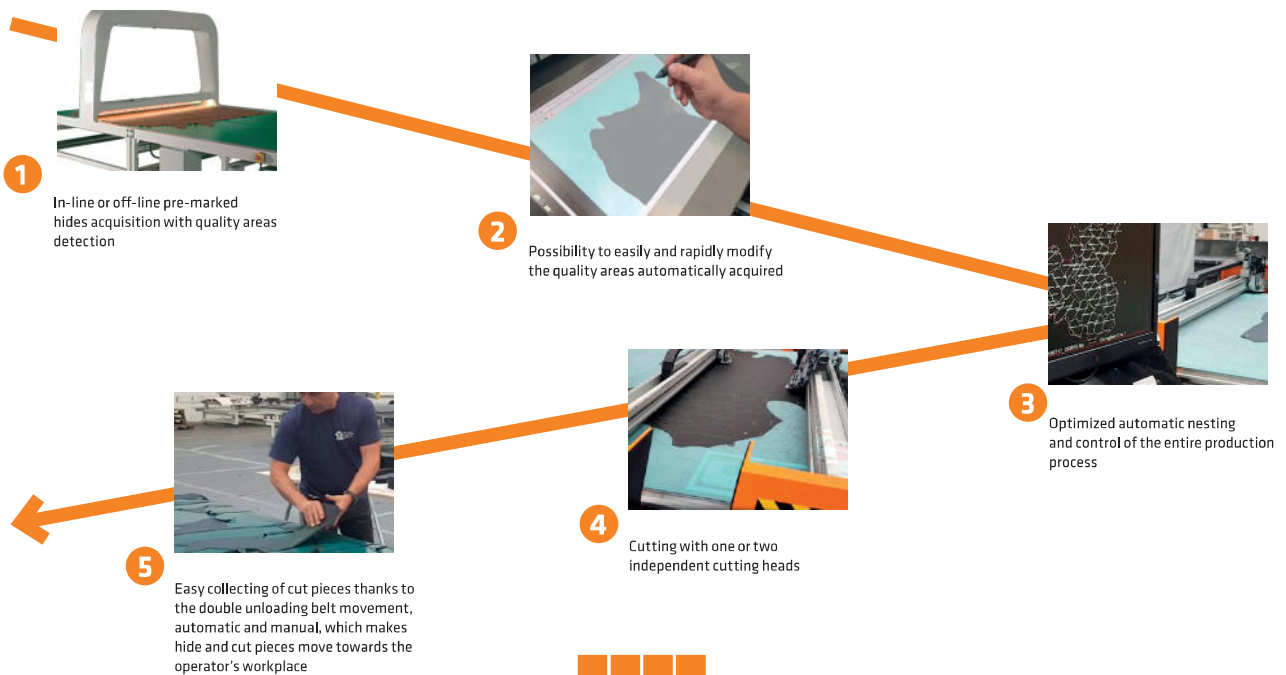


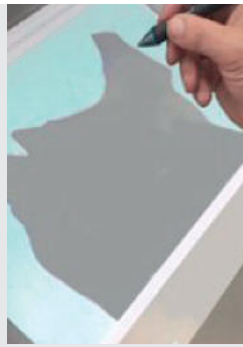
# FlashCut Flex 3026 B/3

THE ULTIMATE SOLUTION TO CUT LEATHER AND FABRIC



From the leather inspection to the collection of the cut pieces with the minimum operator's intervention. This solution joins three operations in a single machinery to enhance the production efficiency, reduce the material waste, optimize and constantly monitor the production process.





## FIVE TOOLS AND A CAMERA

Specially meant for the automotive and furniture, the new five-tool-head can be equipped with a wide range of cutting chucks, pen, pricker and two punching tools with high punching frequency. A leather pressing tool can be added to improve the hide grip during cutting, as well as a camera for the automatic acquisition of the reference points on the models with three independent stations.

## SCANNING WITH LINEAR CAMERA

To automatically acquire the hide contour and the quality areas. The powerful algorithm to recognize and decode the symbols is capable to automatically acquire the hide contour, the quality areas and the defects. The high definition image and the efficient lighting system allow to avoid errors due to the variation of the environment light thus getting the maximum geometrical precision and the automatic detection of the marking points, no matter the kind and color of the leather, so to minimize the operator's manual interventions.

## MANAGEMENT OF THE ACQUIRED LEATHERS

The image of the hide, which has been acquired in high resolution, is displayed on the wide, interactive, extremely sharp and color-sensitive touchscreen. The pressure-sensitive pen allows to make multi-touch actions and to add or quite rapidly change the quality areas, which have been detected in the scanning phase. A software package for the hides stock management enables their supervision for the next optimized nesting operations and grants a real time access to all the information and features of the stocked hides.

## OPTIMIZED NESTING SYSTEMS

The automatic nesting systems, expressly developed for the automotive and furniture, and the user-friendly and intuitive interface drastically reduce the processing times, and allow to optimize the material yield, while the analytic reports provide detailed information for the best production management.

## WIDE RANGE OF AVAILABLE MODELS

The wide range of cutting systems for the automotive and furniture offers, in addition to the model FlashCut Flex 3026 B/3, a wide selection varying from Speedy models with double head and bridge architecture to most of the Flex models, which can be set up with loading and unloading station, feeding systems for synthetic materials or in-line and off-line acquisition and nesting systems.



HEADQUARTERS

ATOM ITALY

ATOM s.p.a. Via Morosini, 6 - 27029 Vigevano - PV - Italy - T +39 0381 3021 - info.atom@atom.it - www.atom.it